



# Project Update – Jan 2024

Tony Perriam

Community Development Officer

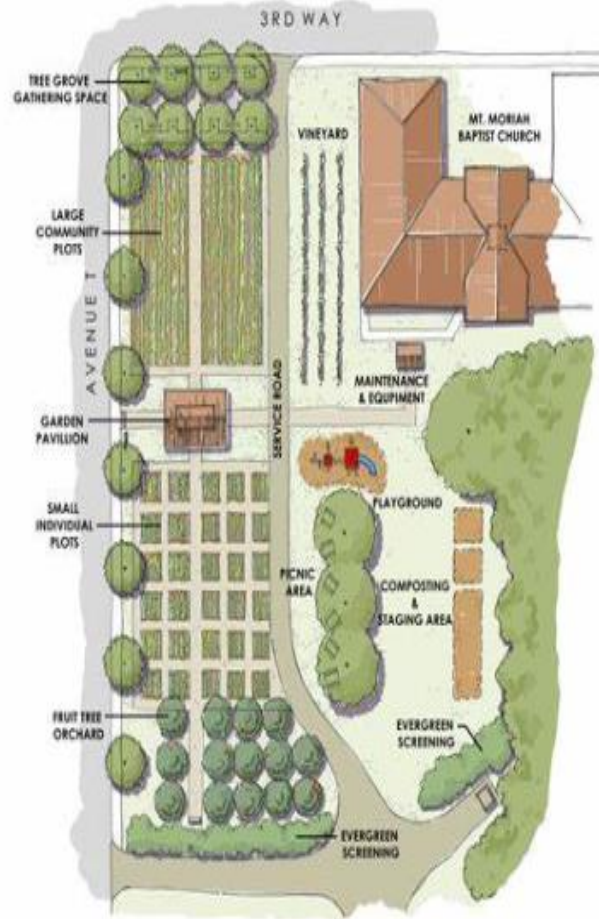
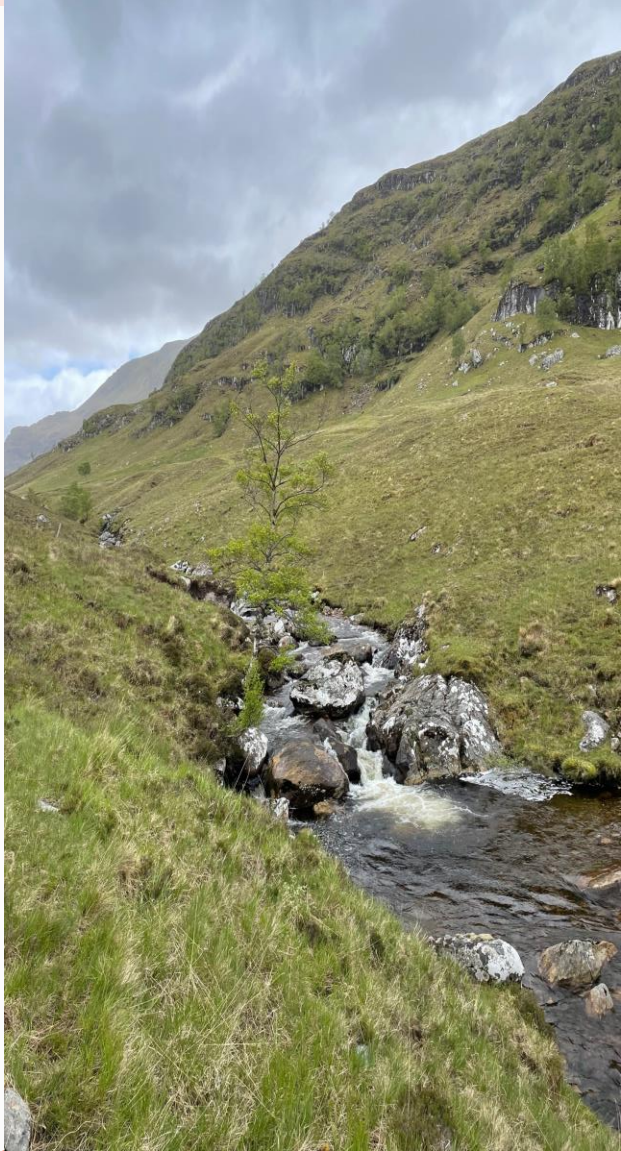
# What are our current projects, and why?



## Priorities over 2024-25:

- Spean Bridge Community Garden
- Roy Bridge Primary School
- Roy to Spean Cycle Path
- Firewood, Playpark and Defibrillators

**All identified as priorities in Community Action Plan**



# Spean Bridge Community Garden

- CAT approved in principle
- Nil consideration
- Awaiting tree survey and legals
- Additional privately owned land
- Consultation and open days
- Allotments, riverside walk

# Roy Bridge Primary School

- CAT approved in principle with SG endorsement
- Consideration at market value will require SLF funding
- More complex: Taigh na Sgoile lease
- CRF application for 50% of £45,000 pre-planning costs
- Housing Needs Survey, consultation and open days
- Affordable housing, flexible business units, holiday let



# Roy to Spean Cycle Path

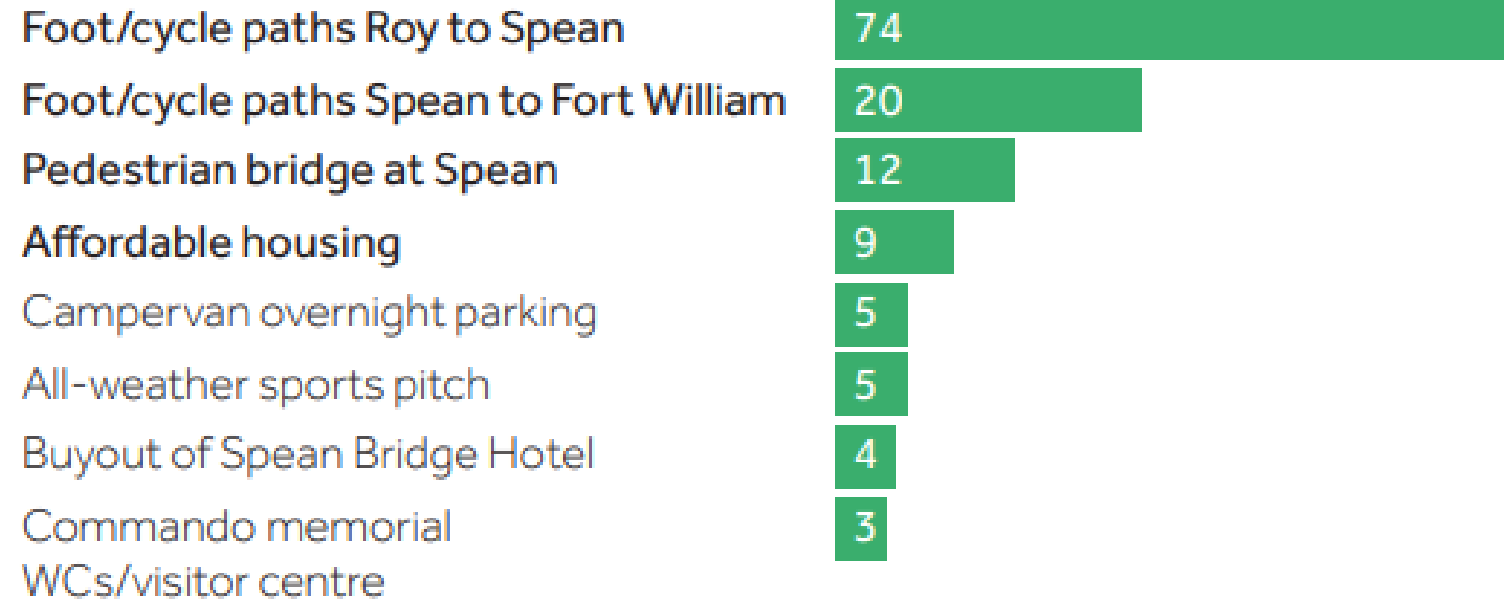
- Active Travel SCIO and funding challenges
- Leanachan – Spean – Commando Mem’l
- Roy – Inverroy upgrade
- Inverroy to Spean



## Action Plan Extract

### One big thing with access to grant funding

(237 replies):



# Other Projects over Winter 2023-24

**Community Firewood Bank** – delivered pre-Christmas to 43 households with residents over 75

**Playpark** – fundraising successful, installation by April

**Defibrillators** – Mhor Health and also at SB Fire Station, RB Memorial Hall, SB Golf Club, Kilmoivnivaig Church



# Thank You!

Website: [www.srascio.scot](http://www.srascio.scot)

